

# pushTAN: Adding a new device

[www.sparkasse-nuernberg.de](http://www.sparkasse-nuernberg.de)

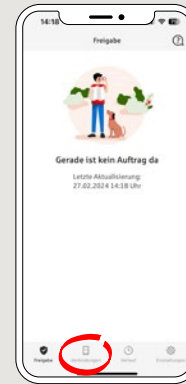


If you have a new smartphone, you can set it up in just a few steps in the S-pushTAN app and connect it to your online banking. Important: To use this setup path, you need access to your existing S-pushTAN app. If it is no longer available, please use the instructions "pushTAN initial setup". This guide also applies to adding another device (maximum 5) to the device group.

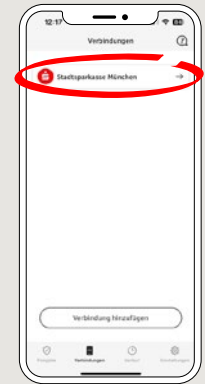
**1** Enter the password for your S-pushTAN-App or use the TouchID or Face-ID (iOS)/Biometrie (Android).



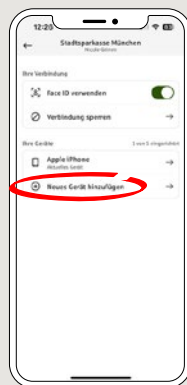
**2** Click on „Verbindungen“.



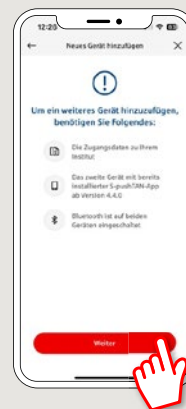
**3** Select the existing pushTan connection of the Sparkasse Nürnberg.



**4** Next, click on „Neues Gerät hinzufügen“.



**5** Please follow the instructions and allow the Bluetooth connection on both devices. Then click on „Weiter“.



**6** Please click on „Neuen QR-Code erstellen“.



**7** Install the S-pushTAN app on your smartphone.



DO YOU HAVE ANY QUESTIONS? WE ARE HERE FOR YOU:

Phone: 0911 230-1000  
E-Mail: [info@sparkasse-nuernberg.de](mailto:info@sparkasse-nuernberg.de)

Consultation and service:  
Monday to Friday from 8-18 h

GETTING THERE QUICKLY IS EASY:

Further online services of Sparkasse Nuremberg  
can be found at [www.sparkasse-nuernberg.de/services](http://www.sparkasse-nuernberg.de/services)



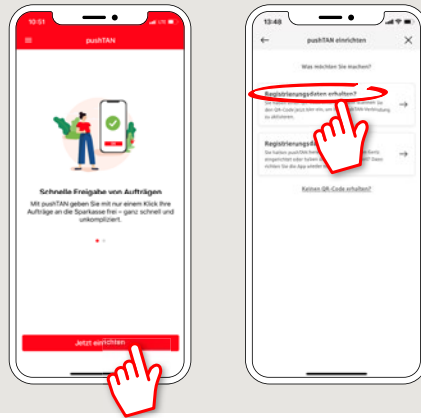
# pushTAN: Adding a new device

[www.sparkasse-nuernberg.de](http://www.sparkasse-nuernberg.de)



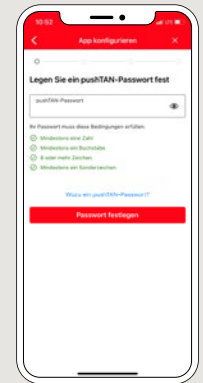
If you have a new smartphone, you can set it up in just a few steps in the S-pushTAN app and connect it to your online banking. Important: To use this setup path, you need access to your existing S-pushTAN app. If it is no longer available, please use the instructions “pushTAN initial setup”. This guide also applies to adding another device (maximum 5) to the device group.

**8** Start the app and tap “Jetzt einrichten” → “Registrierungsdaten erhalten”.

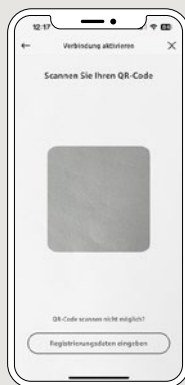


**9** In the next step, you assign a password for the app and confirm this by re-entering it.

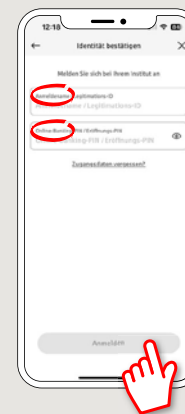
Then select whether you want to open the app using TouchID or Face-ID (iOS)/Biometrie (Android).



**10** Now allow the access to your camera to scan the QR-Code.



**11** Next, enter the access data for your Online-Banking.



**12** Your pushTAN connection has now been successfully set up! Please click on “Fertig”.



DO YOU HAVE ANY QUESTIONS? WE ARE HERE FOR YOU:

Phone: 0911 230-1000  
E-Mail: [info@sparkasse-nuernberg.de](mailto:info@sparkasse-nuernberg.de)

Consultation and service:  
Monday to Friday from 8-18 h

GETTING THERE QUICKLY IS EASY:

Further online services of Sparkasse Nuremberg can be found at [www.sparkasse-nuernberg.de/services](http://www.sparkasse-nuernberg.de/services)

